

# Suzanne B. Calder

## Community Stakeholders Panel Discussion

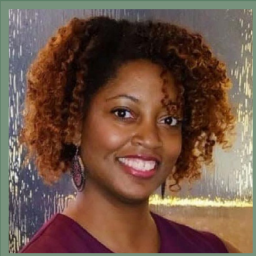
1:45pm - 3:00pm (optional)

Join us for an intimate discussion of how bias plays a role in perpetuating NIMBY-ism (*Not In My Back Yard*) and, in turn, a lack of affordable housing in our communities.

Our panelists will explore questions such as:

- What are the greatest obstacles to creating affordable housing?
- To battle NIMBY-ism, should we fight to change hearts and minds or can we regulate our way out of it?
- How can providers and consumers of affordable housing leverage their partnerships to create greater equity in their communities?

### OUR PANELISTS\*



**Tiffany McDowell**  
Equity Institute Director  
YWCA Evanston/North Shore



**Jolene Saul**  
Vice President  
Brinshore Development LLC

\*Follow us on Facebook for the upcoming announcement of our full panel.

[facebook.com/connect2home](https://facebook.com/connect2home)